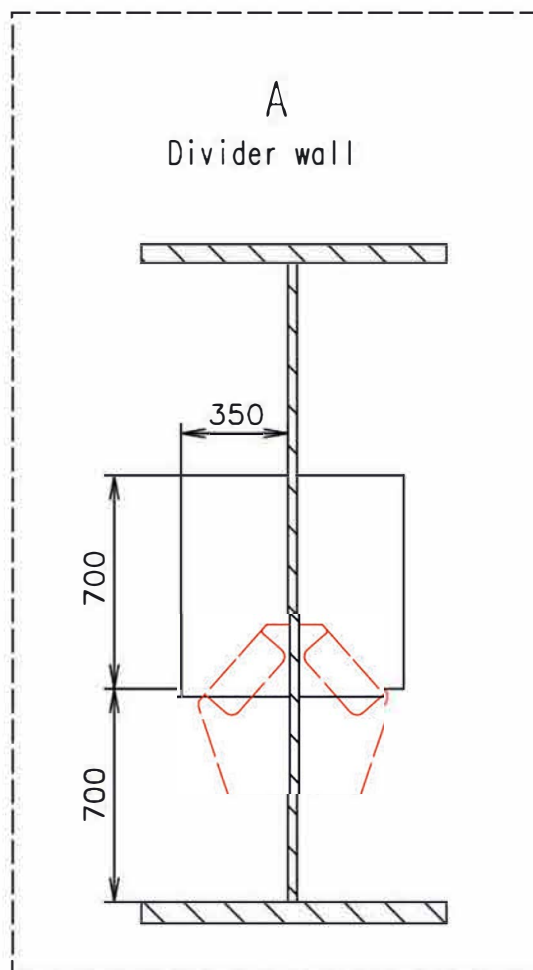
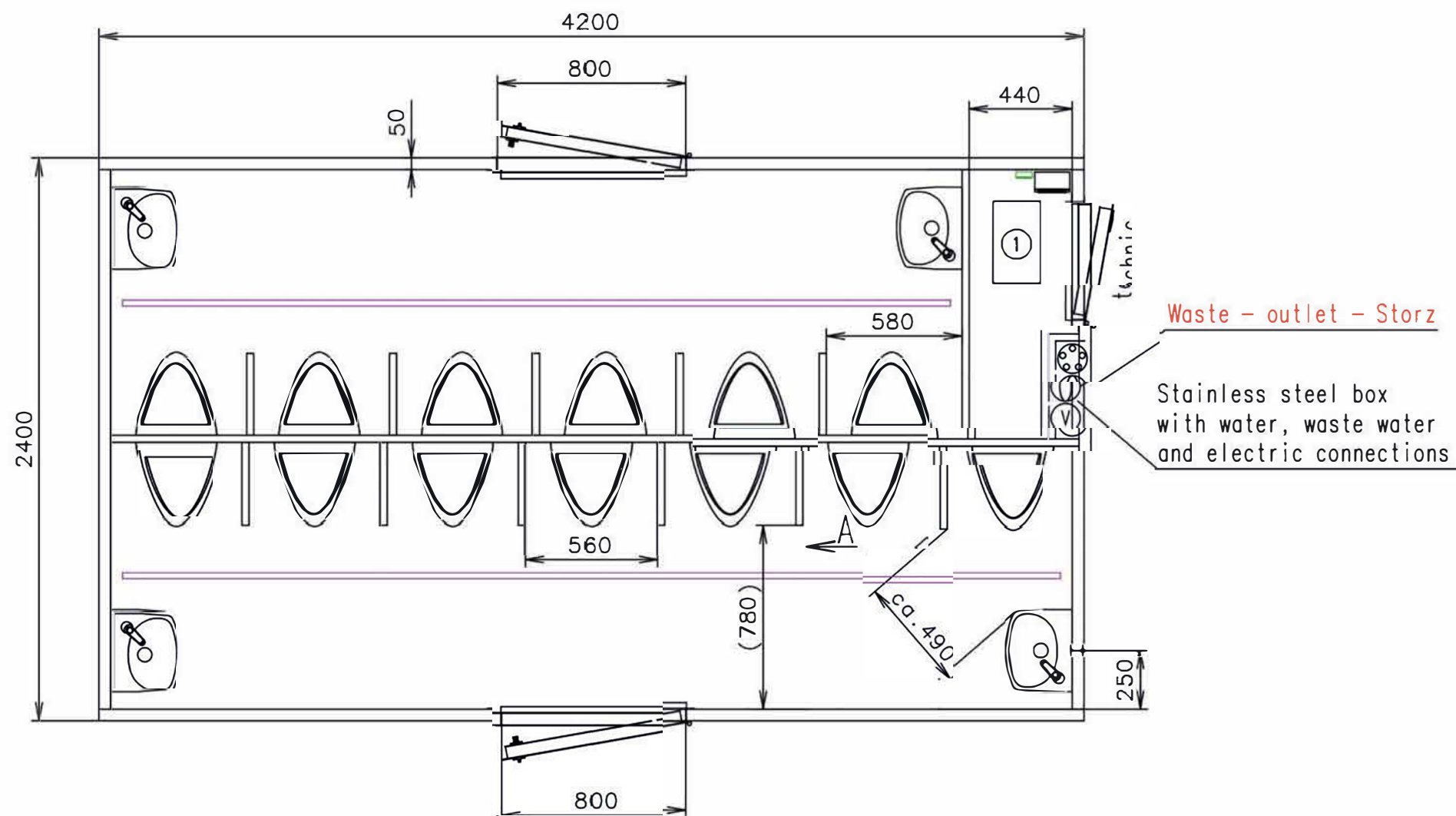




Connection hoses and cables	
Water hose:	✗
Waste water hose:	✗
Electric cable:	✗



(Cabling and piping is not shown on the 3D views and drawings)

EWK frame - thickness 4mm

External door - automatic closing system

Notes: Door - simple handle from both sides + lock, without cylinder

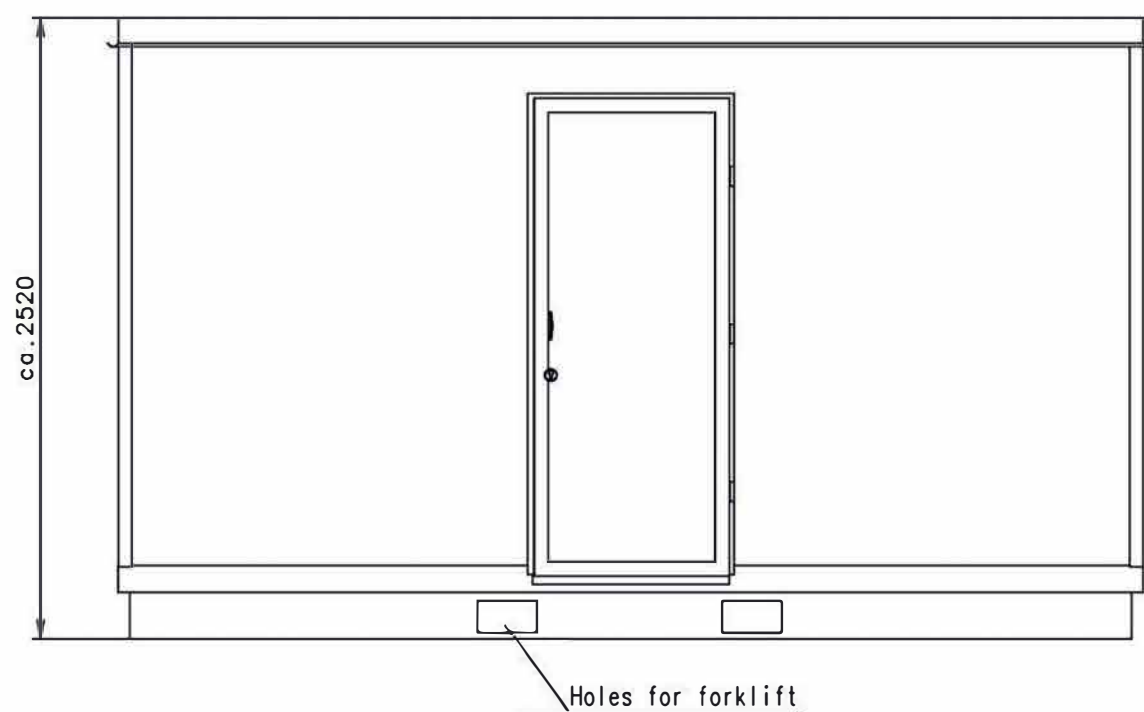
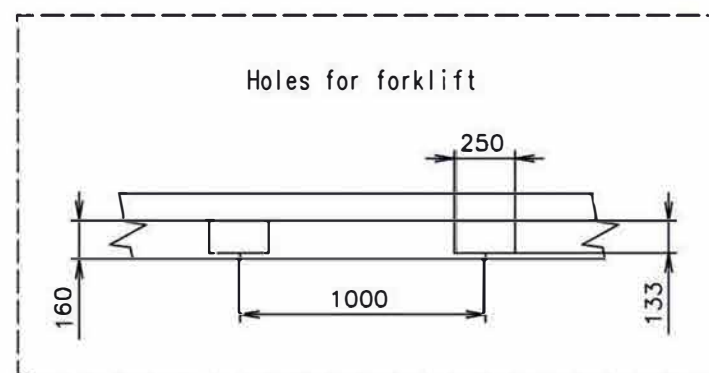
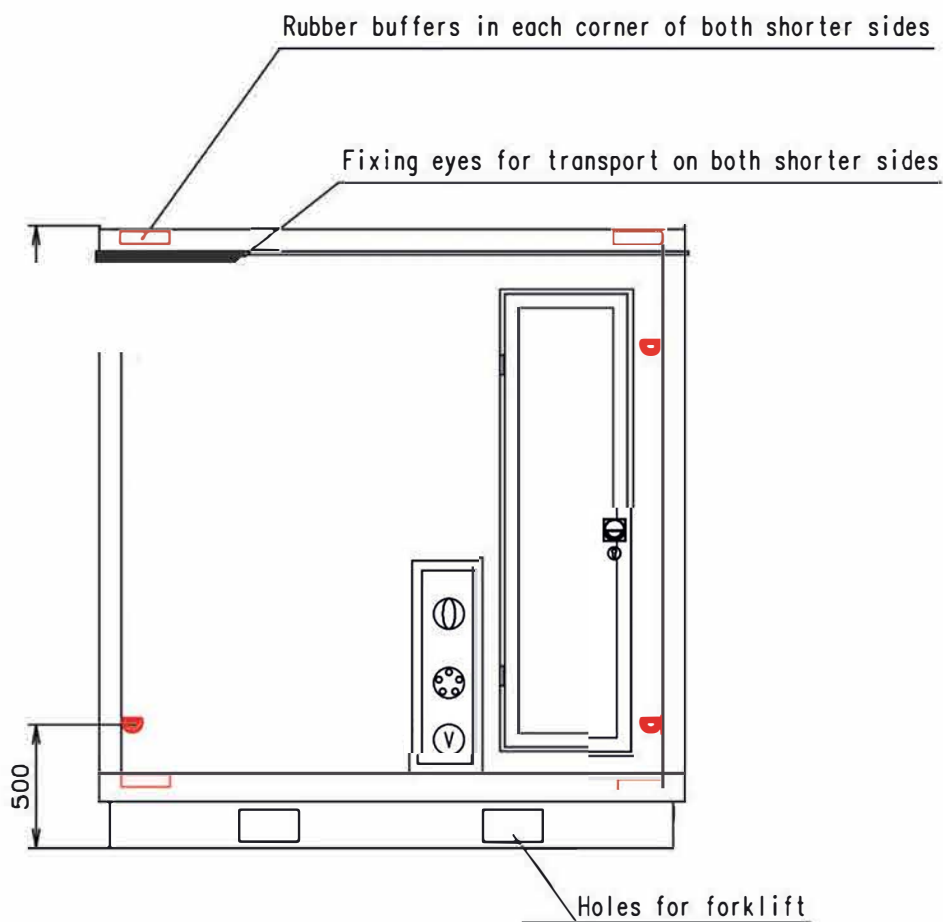
Interior height:	2200 mm	Total weight:	-
Color:	RAL 9010	Tare weight-estimate:	-
Floor:	PVC Supreme plus 030	Centre of wheels from rear side:	-
Date:	9.2.2023	Wheels:	-

SaniGreen

Drawing number:
4264-42-sketch 1 EWK_1/2 (Sprenger)



Connection hoses and cables	
Water hose:	✗
Waste water hose:	✗
Electric cable:	✗



- Ⓧ Water connection 3/4" (through the wall)
- Ⓧ Electric connection (through the wall) (230V-16A)
- Ⓧ Effluent connection ø75 (through wall) Storz
- Light switch
- Switch board (1200 over floor)
- LED stripe
- Ⓧ Wash-basin Siko Multi (350x280) EUR913 + timing push water tap (only cold water)
- Ⓧ Urinal - Uridan (waterless)
- ① Gray water tank Jets 12l

EWK frame - thickness 4mm

External door - automatic closing system

Notes: Door - simple handle from both sides + lock, without cylinder

Interior height:	2200 mm	Total weight:	-
Color:	RAL 9010	Tare weight-estimate:	-
Floor:	PVC Supreme plus 030	Centre of wheels from rear side:	-
Date:	9.2.2023	Wheels:	-

Drawing number:

4264-42-sketch 1 EWK_2/2 (Sprenger)

(Cabling and piping is not shown on the 3D views and drawings)

SaniGreen