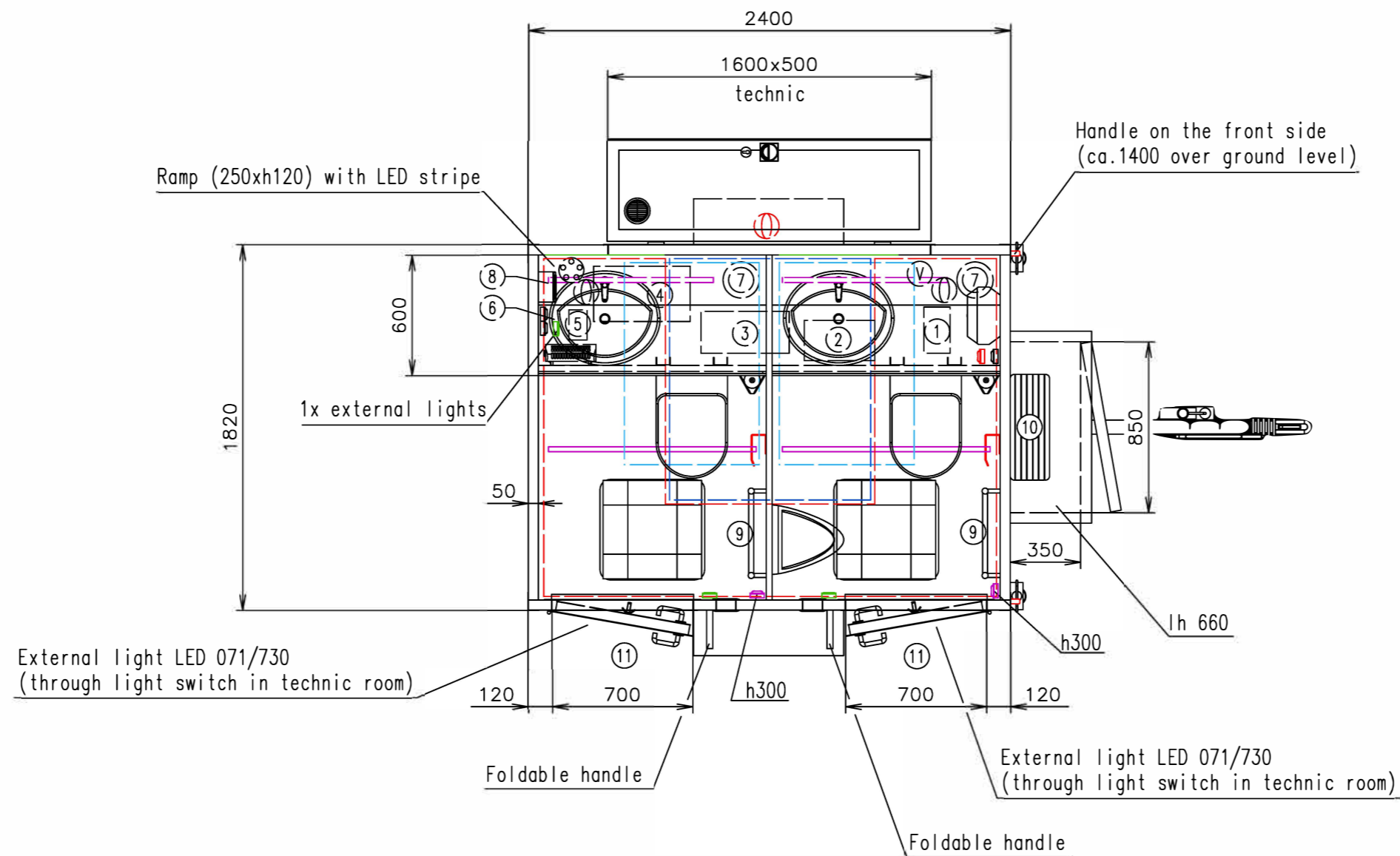


Connection hoses and cables	
Water hose:	✓
Waste water hose:	✗
Electric cable:	✓



External doors – without cylinders

Working desks in waterproof compact desk Egger (dark color)

Heatings + boiler only with external electric connection

Waste water from vacuum pump either to tank or directly out through wall under technic door

Notes:

Interior height:	2100 mm	Total weight:	1500 kg
Color:	RAL 7042	Tare weight-estimate:	1100 kg
Floor:	PVC Jupiter 148708	Centre of wheels from rear side:	1200 mm
Date:	19.12.2017	Wheels:	195/50 R13C

(Cabling and piping is not shown on the 3D views and drawings)

**SaniGreen**

Drawing number:  
2855-24-1\_1/2 (Sprenger)

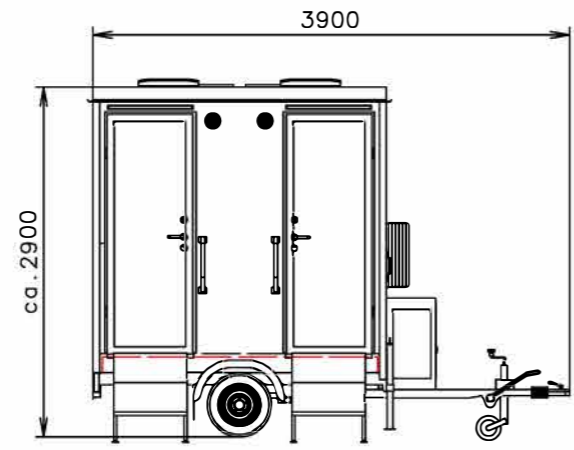
Connection hoses and cables	
Water hose:	✓
Waste water hose:	✗
Electric cable:	✓



- Ⓧ Water connection 3/4" (through the wall) + filter + reduction valve
- Ⓢ Electric connection (through the wall) (230V-16A)
- Ⓛ Ⓧ Effluent connection 2" (under floor from tank) or 1" (directly from Jets pump, through wall)
- Ⓢ Power point
- Ⓢ Power point 12V
- Ⓢ Thermostat of heating panel
- Ⓢ Light switch
- Ⓢ Switch board (500 over floor)
- Ⓢ LED stripe
- Ⓢ Heating (500W)
- Ⓢ Solar panel
- Ⓢ Wash-basin (built-in) Multi 1690 (550x470) + standard water tap

- Ⓢ Vacuum toilet Jets
- Ⓢ Urinal - Uridan (waterless)
- Ⓢ Hot water boiler Wterm FHN (5l)
- Ⓢ Waste-water tank (on the floor) (12250 x w1680 x h210 = 400l) + float sensor + indicator
- Ⓢ Water tank (on the floor) (11000 x w1200 x h210 = 200l) + float sensor + indicator
- Ⓢ Roof window Dometic (400x400)
- Ⓢ Ventilation ø120
- Ⓢ Brush toilet
- Ⓢ Special toilet paper holder
- Ⓢ Clothes hanger
- Ⓢ Mirror (600x600) + black frame around

- ① Water pump Shurflo (12V)
- ② Gray water tank Jets 12l
- ③ Vacuumator Jets ULTIMA C200 DC
- ④ Battery Banner Energy Bull 230Ah (12V)
- ⑤ Charger Multi XS 25A
- ⑥ Regulator EP Solar 20A
- ⑦ Speaker - in the ramp
- ⑧ Radio
- ⑨ Heating panel - white (w450 x h960) (300W) - through thermostat
- ⑩ Spare wheel on front wall
- ⑪ VIP stairs



(Cabling and piping is not shown on the 3D views and drawings)

- External doors - without cylinders
- Working desks in waterproof compact desk Egger (dark color)
- Heatings + boiler only with external electric connection
- Waste water from vacuum pump either to tank or directly out through wall under technic door

Notes:

Interior height:	2100 mm	Total weight:	1500 kg
Color:	RAL 7042	Tare weight-estimate:	1100 kg
Floor:	PVC Jupiter 148708	Centre of wheels from rear side:	1200 mm
Date:	19.12.2017	Wheels:	195/50 R13C



Drawing number:  
2855-24-1\_2/2 (Sprenger)